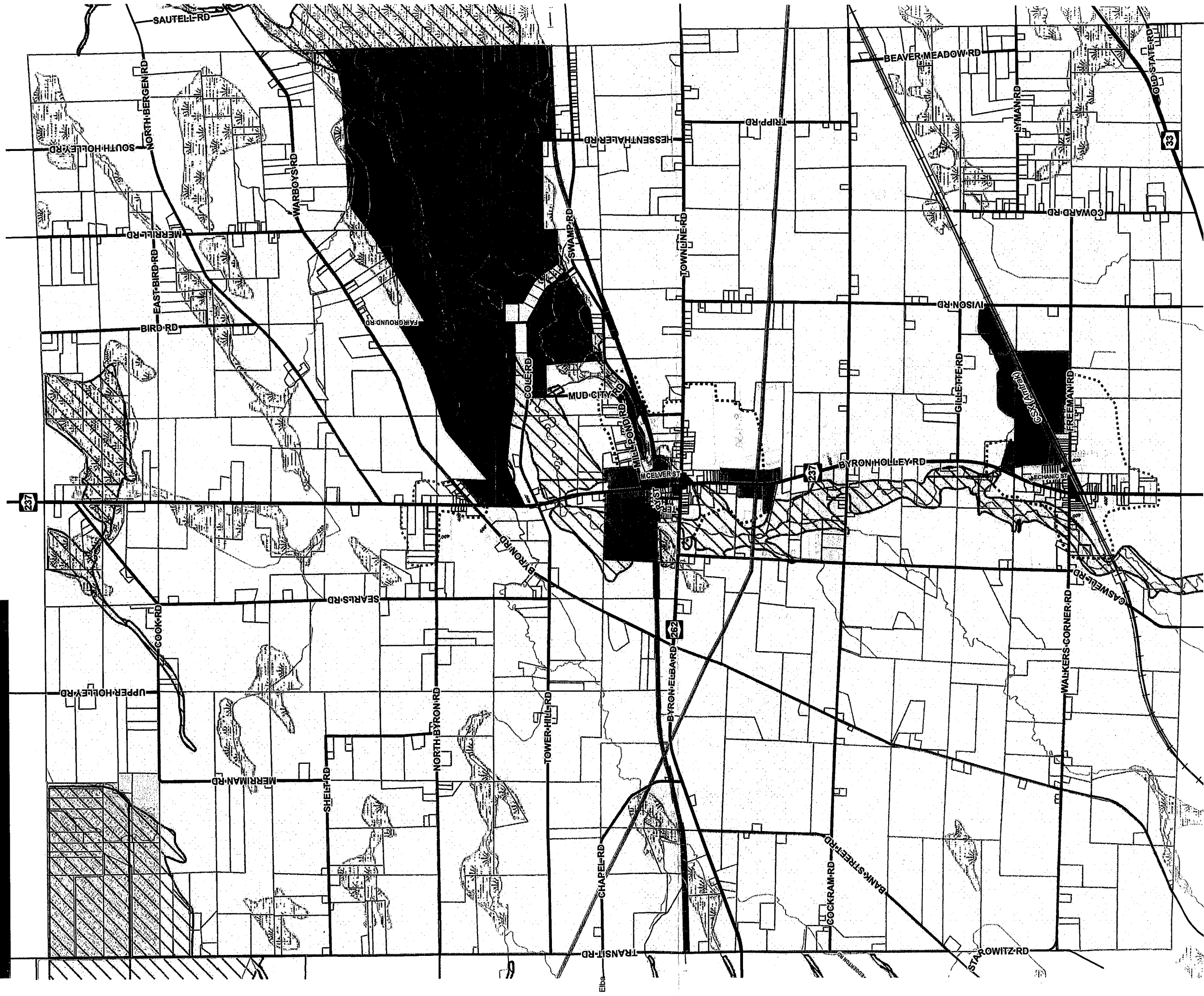


# Town of Byron Zoning Map

In accordance with the  
Town of Byron  
Zoning Law



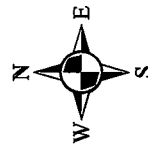
## Map Features

### Roads

- Interstate Highway
- State Routes
- County Highway
- Town Road
- Village Street
- Electric Line
- Active Railroad
- Abandoned Railroad
- 2011 Tax Parcels
- SG Development Areas
- Streams
- State Regulated Wetlands
- Flood Hazard Area

### Zoning Districts

- A Agricultural
- A-R Agricultural-Residential
- C-1 Neighborhood Commercial
- C-2 General Commercial
- I-1 Industrial
- L-C Land Conservation
- R-1 Residential



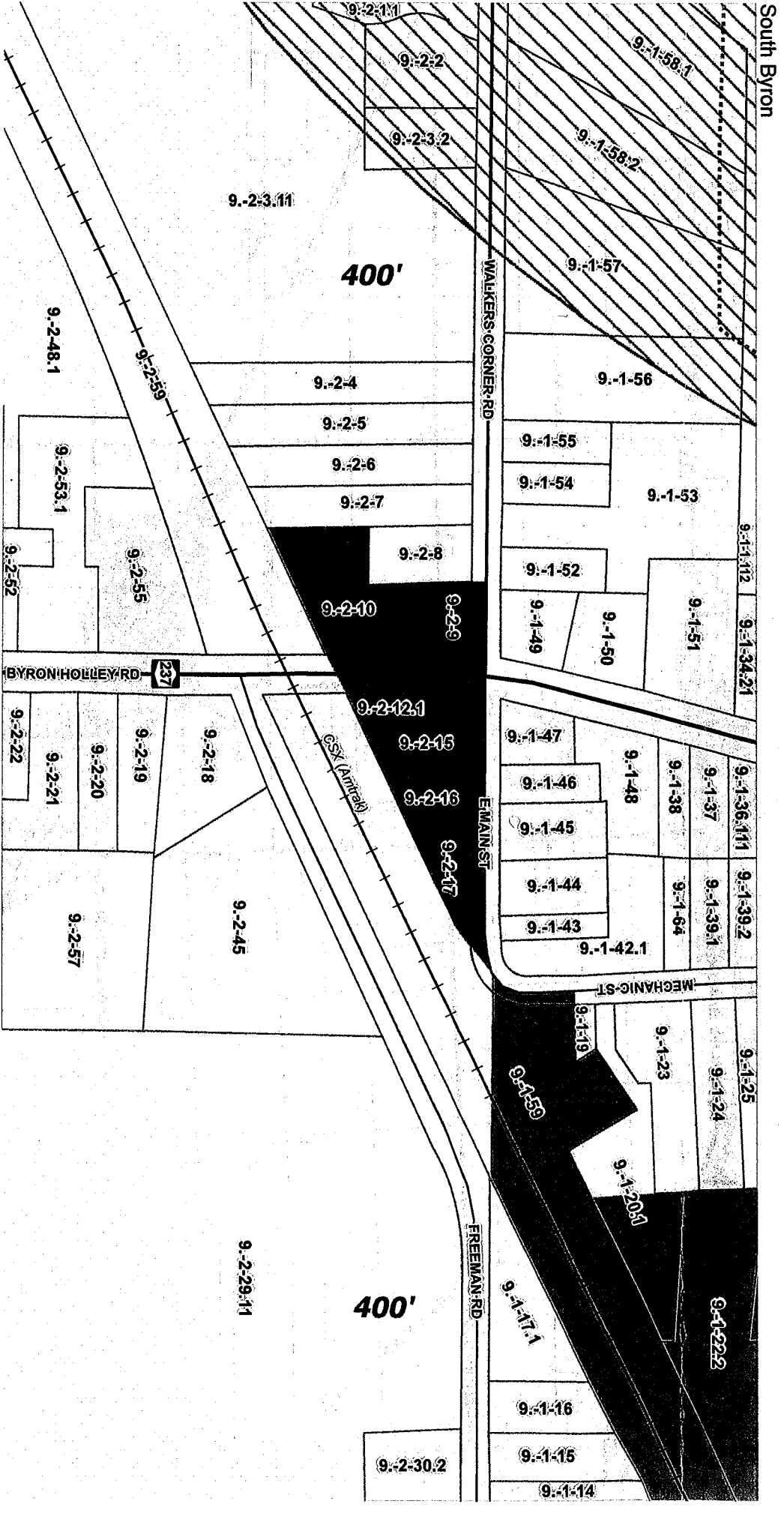
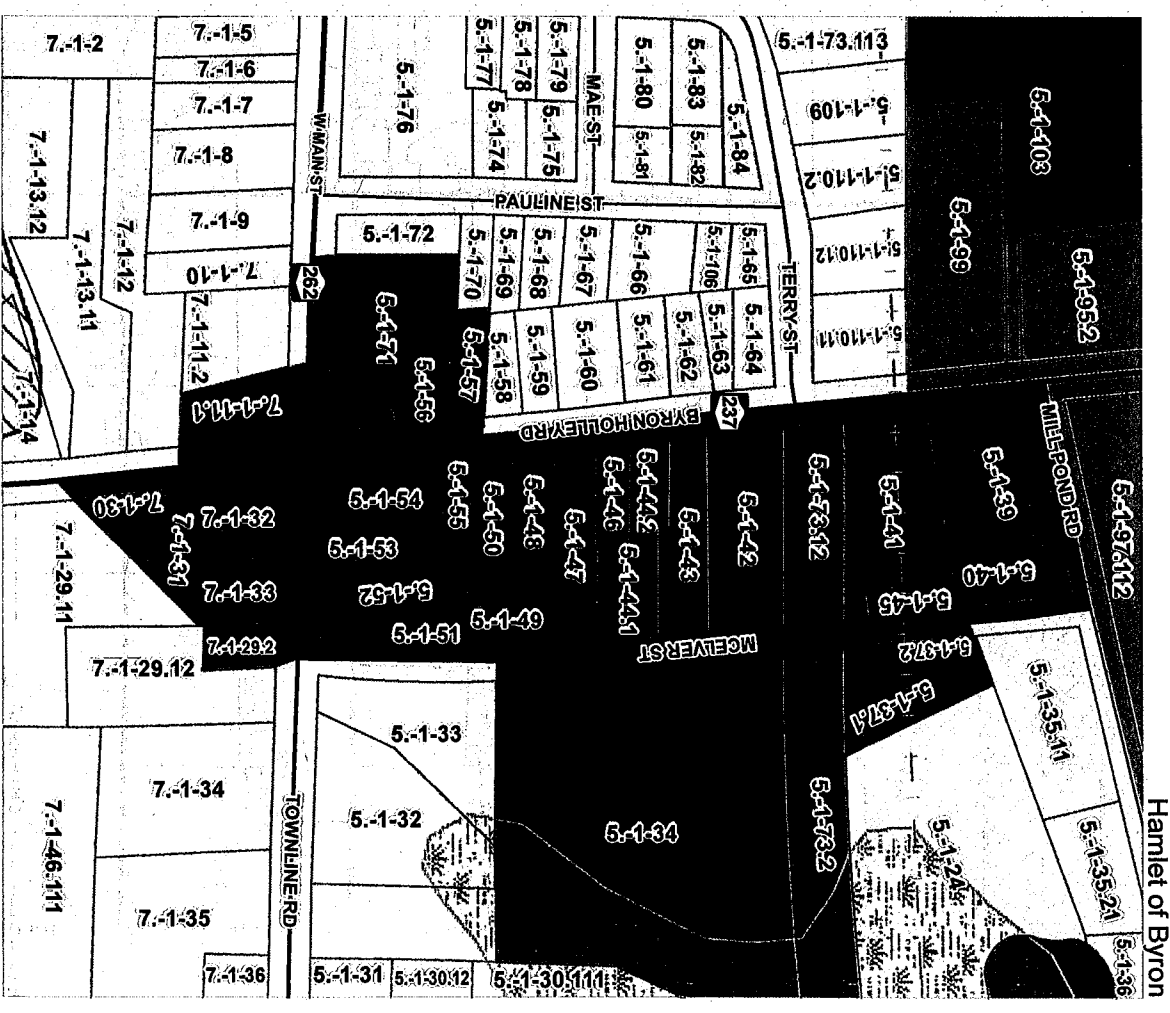
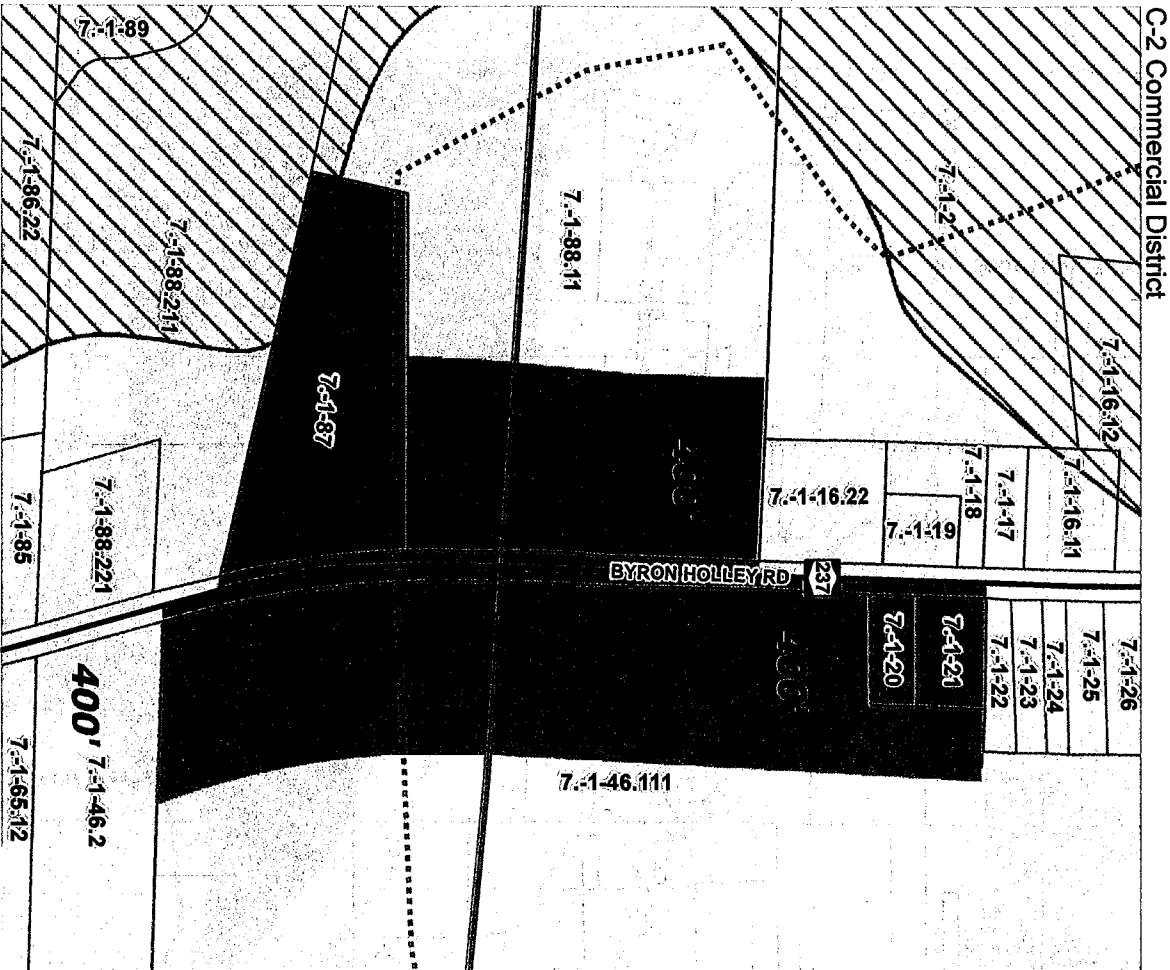
Revisions  
06/12/1980 9/13/2006  
06/08/1983  
05/28/2003

Map Created by the  
Genesee County  
Department of Planning  
May 2012



# Town of Byron Zoning Map Detail Maps

In accordance with the  
Town of Byron  
Zoning Law



### Map Features

**Roads**

- Interstate Highway
- State Routes
- County Highway
- Town Road
- Village Street
- Electric Line

**Active Railroad**

**Abandoned Railroad**

**2011 Tax Parcels**

**SG Development Areas**

**Streams**

**State Regulated Wetlands**

**Flood Hazard Area**

### Zoning Districts

- A Agricultural
- A-R Agricultural-Residential
- C-1 Neighborhood Commercial
- C-2 General Commercial
- I-1 Industrial
- L-C Land Conservation
- R-1 Residential

### Revisions

06/12/1980	9/13/2006
06/08/1983	
05/28/2003	

Map Created by the  
Genesee County  
Department of Planning  
May 2012

